



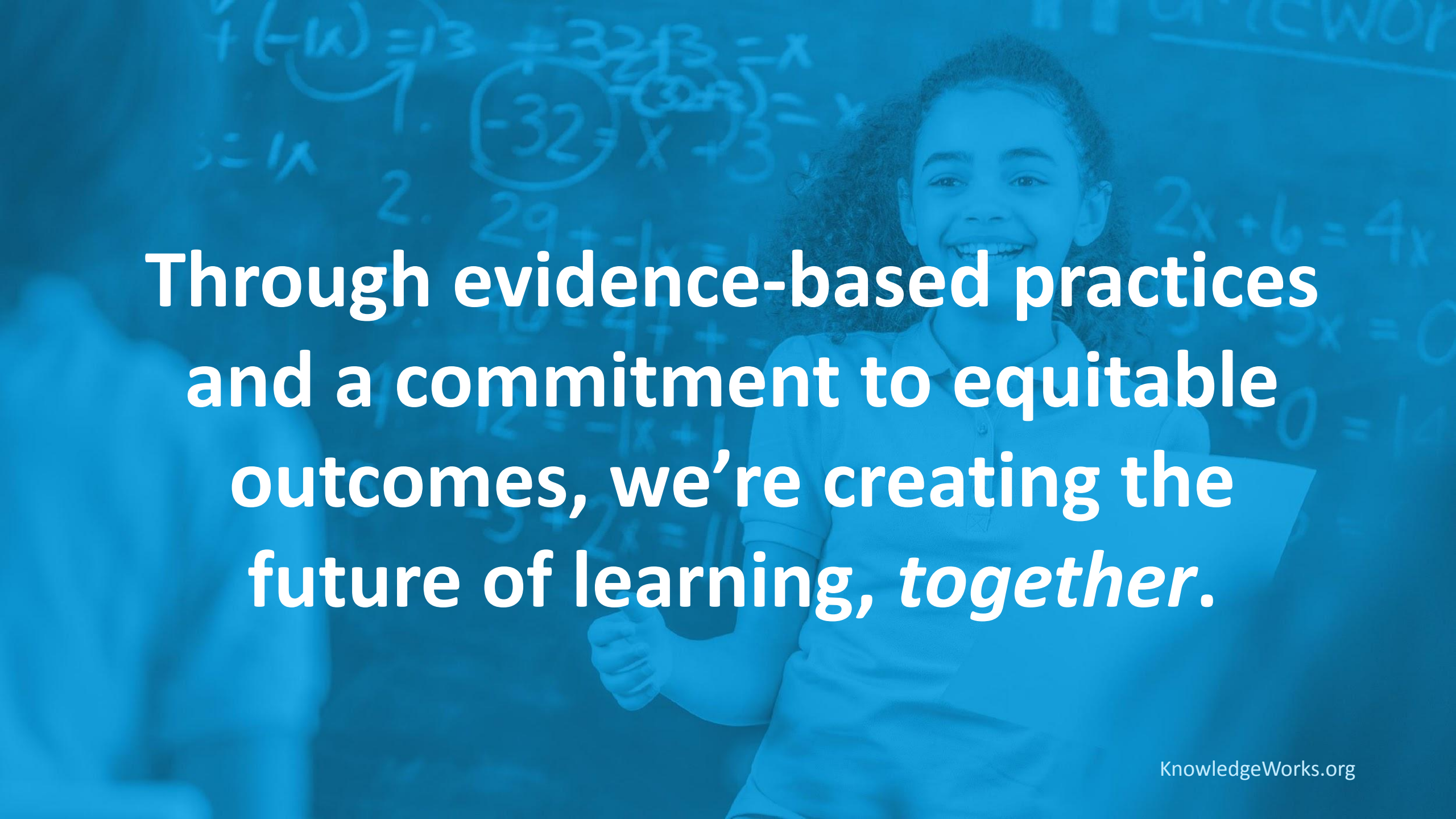
**SYMPOSIUM BREAKOUT SESSION**  
**MONDAY, OCTOBER 25, 2021 | 12:00-1:00 PM ET**

# Personalizing State-Wide Transformation

## **PRESENTERS:**

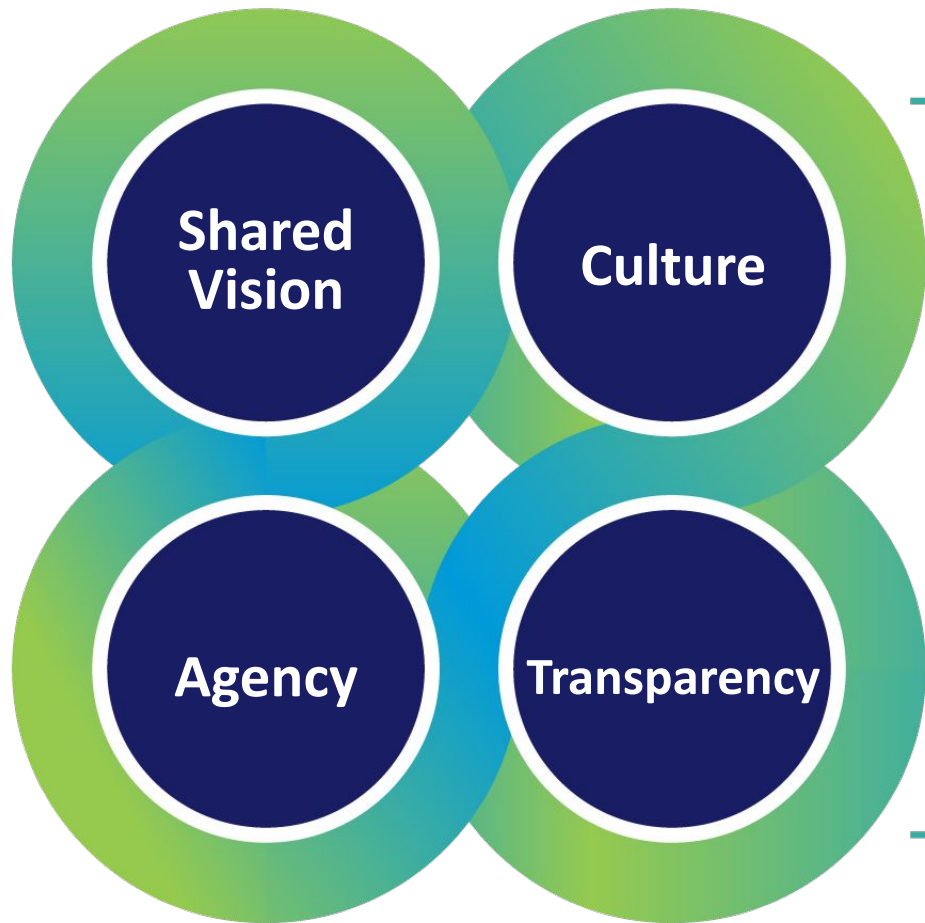
- Amanda Burke, Center for the Future of Arizona
- Ann Ellefson, North Dakota Department of Public Instruction
- Stephanie DiStasio, South Carolina Department of Education
- Virgel Hammonds, KnowledgeWorks





Through evidence-based practices  
and a commitment to equitable  
outcomes, we're creating the  
future of learning, *together.*

# 12 Conditions for Scaling Personalized, Competency-Based Learning



- 
- Partnerships
  - Instruction
  - Comprehensive Assessment Systems
  - Professional Development and Learning
  - Curriculum
  - Learner Supports
  - Flexible Learning Environments
  - Leadership Development
-



A background image showing a group of diverse students in a library or study hall, looking at books and papers. The image is overlaid with a semi-transparent red filter.

# Personalized Learning

Engaging learning experiences  
customized to each student's  
strengths, needs and interests.

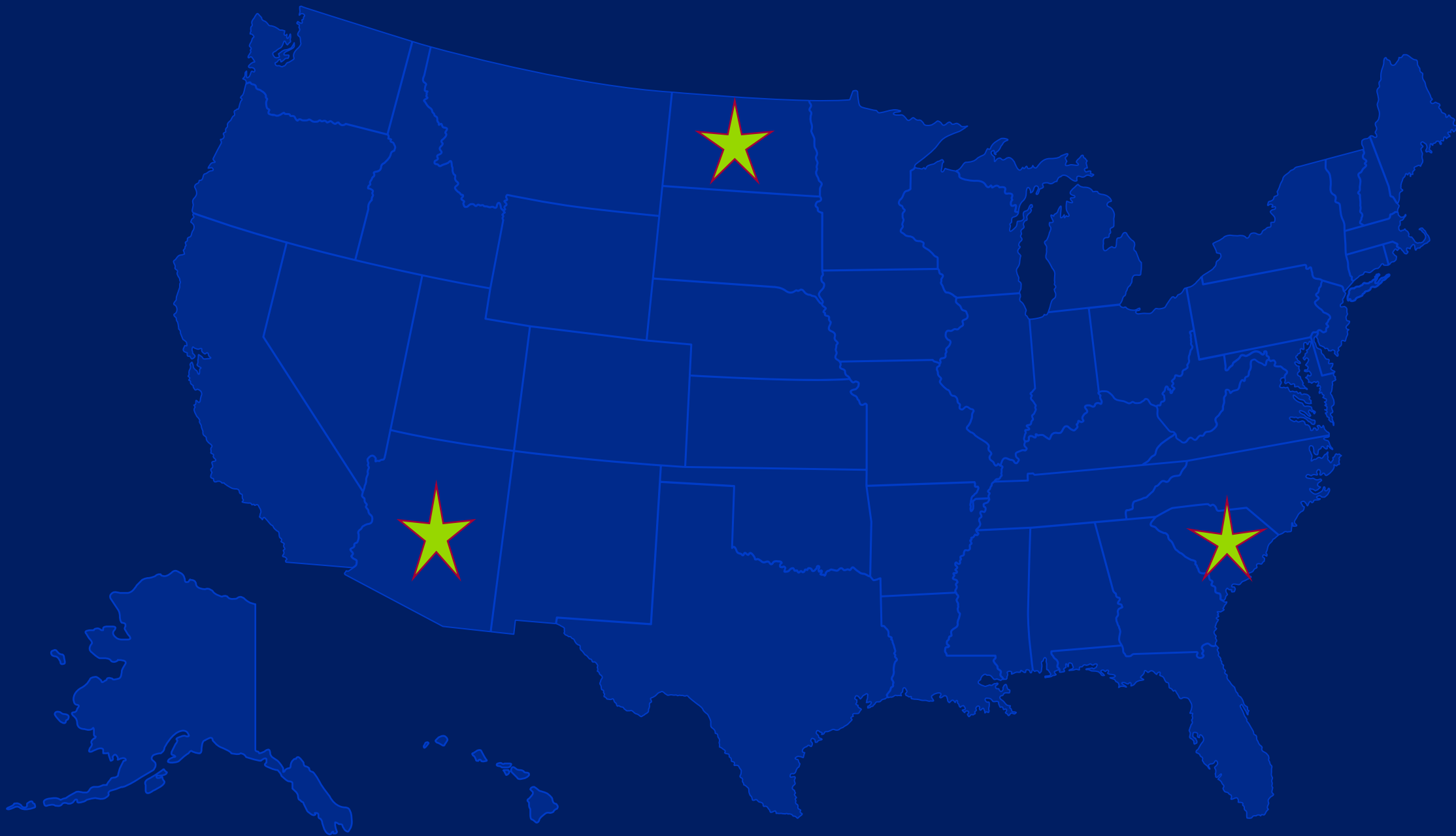
# Competency-Based Education

Flexible pathways, differentiated supports and multiple means to demonstrate skill development.

A background image of a diverse group of students in a classroom setting, overlaid with a semi-transparent purple filter. The students are engaged in various activities, some looking at devices, others interacting with each other.

# Personalized, Competency-Based Learning

Centers each student's strengths, needs and interests and provides differentiated supports and ways to demonstrate what they know and know how to do, ensuring each learner graduates ready for what's next.





A young child with curly hair, wearing a light blue shirt, is holding a spiral-bound notebook. The child is smiling slightly and looking towards the camera. The background is a blurred classroom setting with other students and desks, all tinted with a blue color overlay.

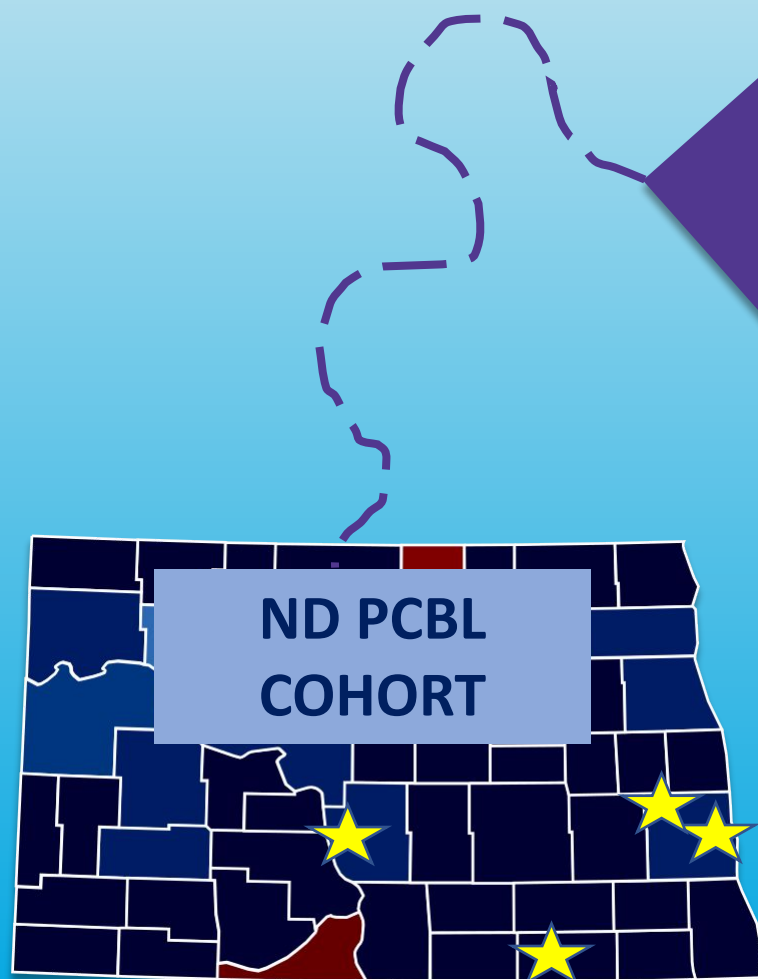
**How does a state  
personalize state-wide  
transformation?**

**North Dakota  
South Carolina  
Arizona**





NORTH DAKOTA DEPARTMENT OF  
**PUBLIC INSTRUCTION**



SYSTEMS  
CHANGE

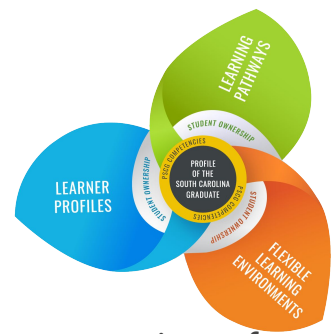
POLICY  
TRANSFORMATION

SCALING  
PCBL

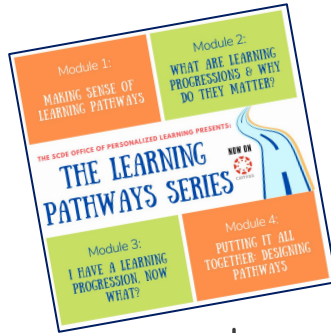
- [Innovative Education](#)
- [ND Portrait of a Grad](#)
- [Scholarship Access](#)
- [Learning Continuum & Mastery Framework](#)
- [Learn Everywhere](#)

**#PersonalizeND**

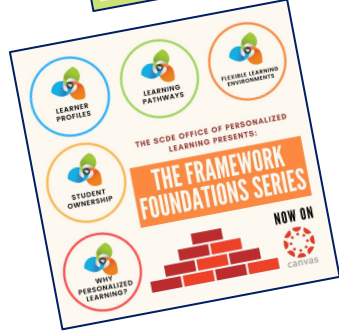
# South Carolina: Connecting the Journey



- Multiple Entry Points
- Layered opportunities to support variety of needs across a district/school
- Supported by Regional Coaching
- Model the Model
- Strong partners



Exploring PCBL

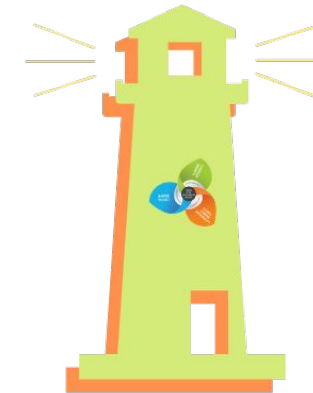


Intensive Support  
with Competency  
Implementation

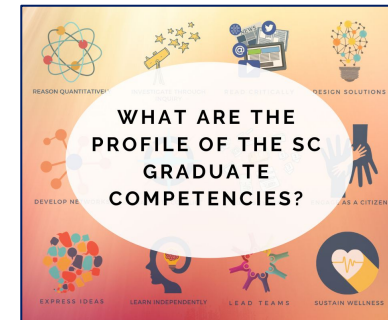


Competency-Based  
Learning Fellows

Making the Profile Actionable



Lighthouse District



KnowledgeWorks.org

# Arizona's Path



## Supportive Conditions



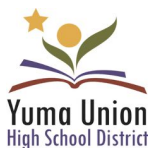
## Sense of Urgency



## Organic Expansion with Statewide Transformation in Mind



## Provide Strong Supports & Show What is Possible



KnowledgeWorks.org



A group of diverse people are gathered in what appears to be a meeting or collaborative workspace. The image is overlaid with a solid orange color. In the foreground, a man with glasses and a beard is gesturing with his right hand while holding a tablet in his left. He is smiling and looking towards a woman with long dark hair who is also smiling. To the left, another man is partially visible, looking towards the group. In the background, several other people are standing and talking, creating a sense of an active, collaborative environment.

**Which comes first, policy or practice?**

What is your role as a state leader  
and what is the role of stakeholders  
within our learning communities?

The background is a dense collage of various photographs from the Aurora Institute Symposium 2019. The images show people in various settings: some are speaking at podiums, others are in small group discussions, and some are in larger group photos. The collage is overlaid with a semi-transparent blue filter. The Aurora Institute logo, featuring a stylized star and the word 'AURORA', is visible in the top left corner of the collage.

# AURORA INSTITUTE *Symposium*

---

OCTOBER 25-27, 2021 | VIRTUAL

*“Leading Competency-Based Education Redesign”*

Thank you for joining us!

**Share Your Thoughts.**

Participate in our one-minute poll (link in chat box).