



SYMPOSIUM BREAKOUT SESSION
TUESDAY, OCTOBER 26, 2021 | 2:30-2:40 PM ET

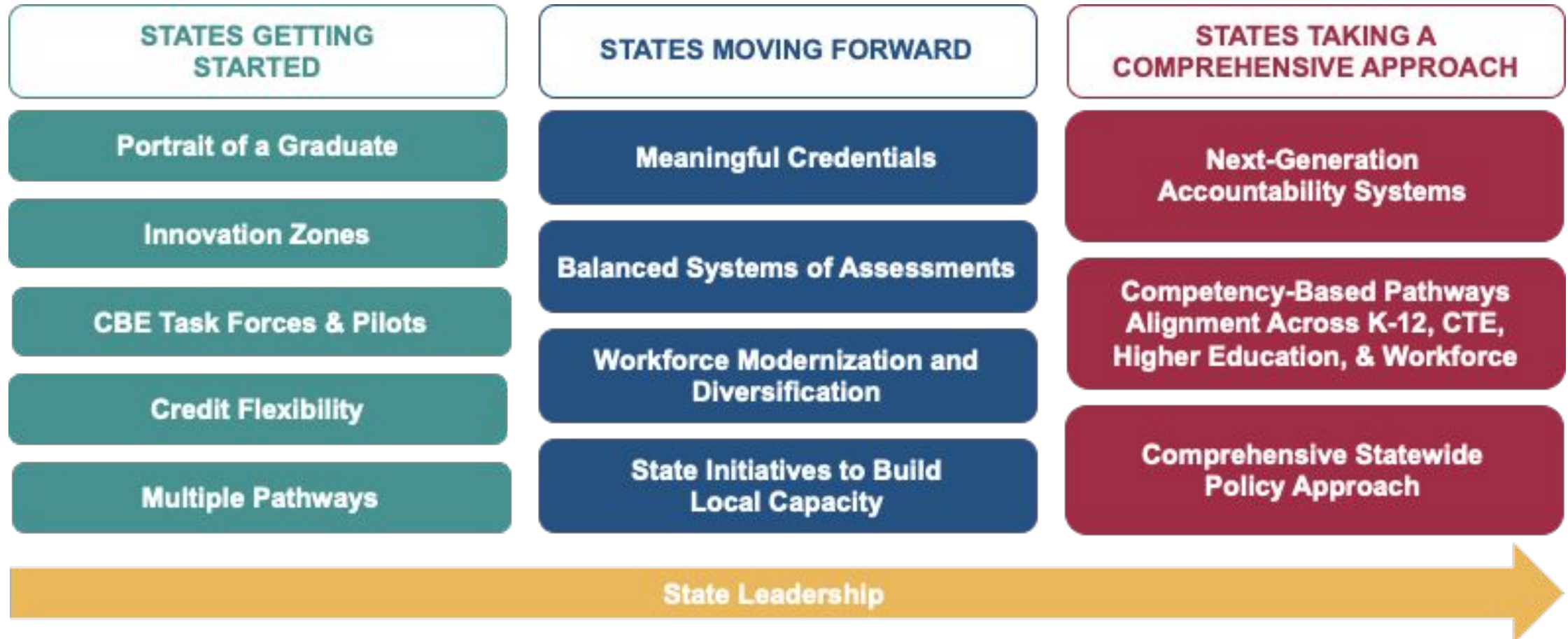
How States Are Redefining Success Using a Profile of a Graduate

PRESENTERS:

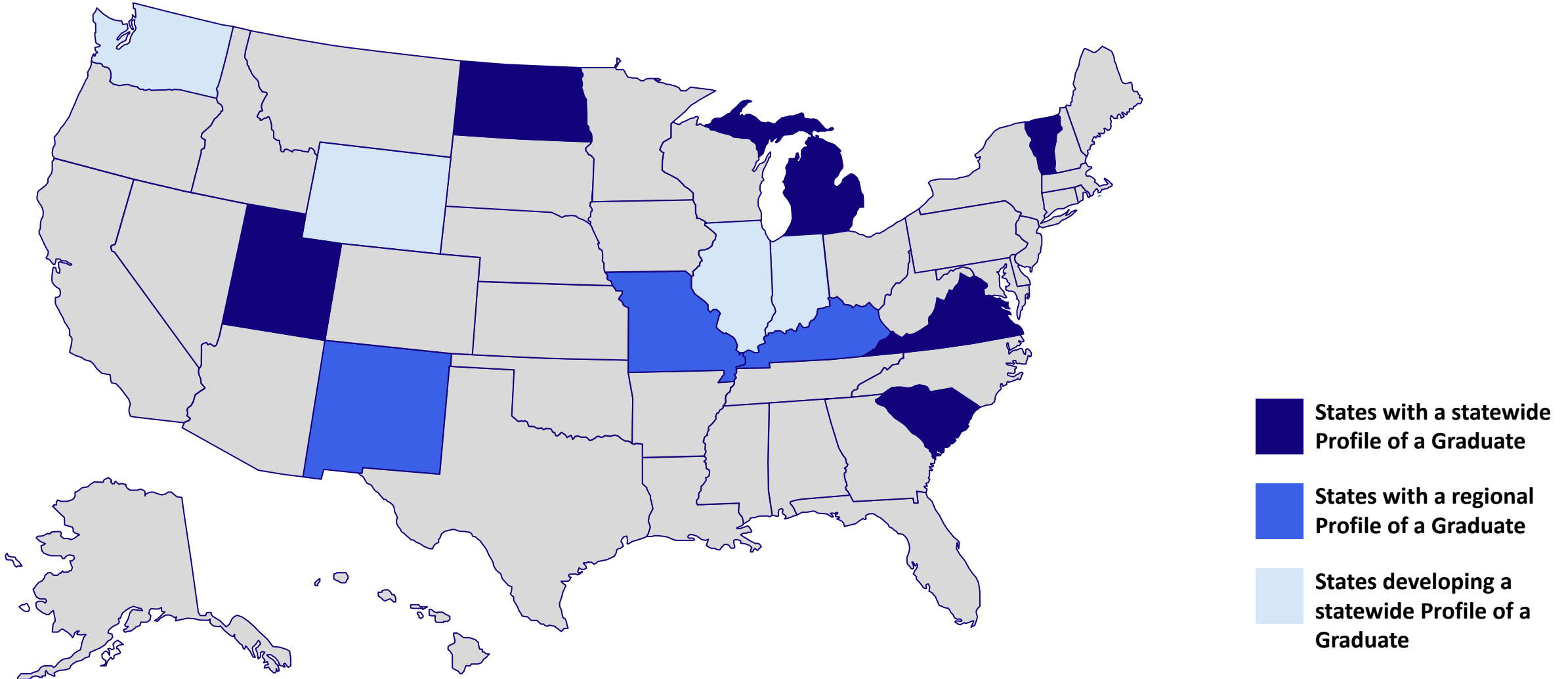
- Alexis Chambers, Aurora Institute, Policy Associate
- Fred Jones, Aurora Institute, Policy Director



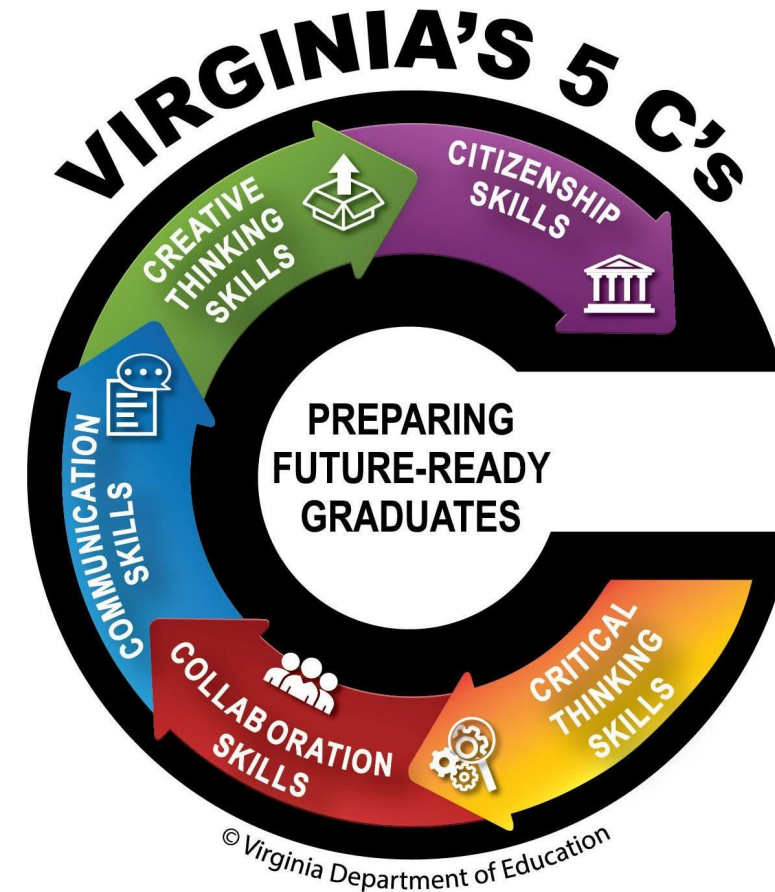
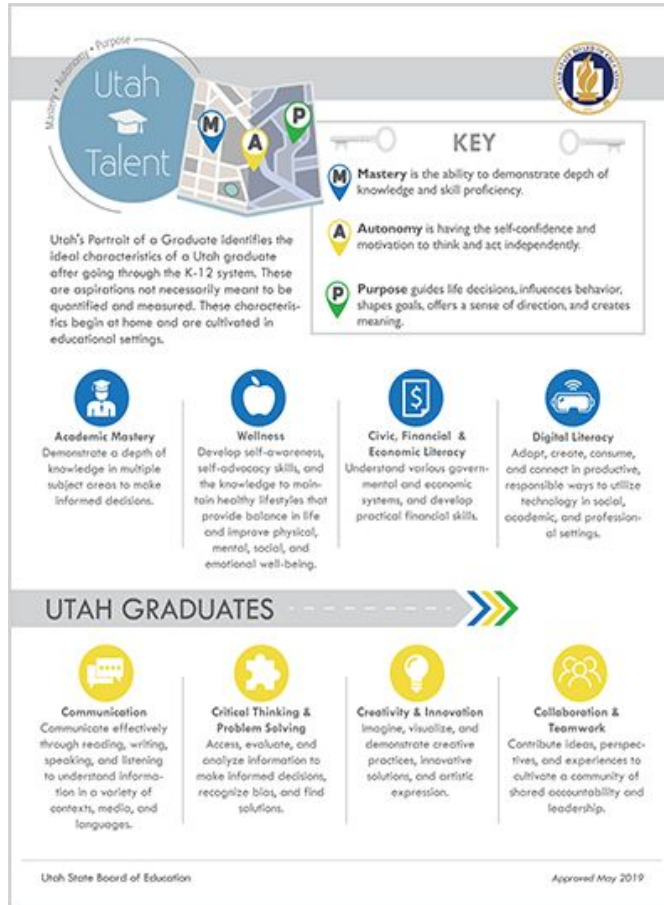
State Policy Entry Points to Create and Support Personalized, Competency-Based Systems



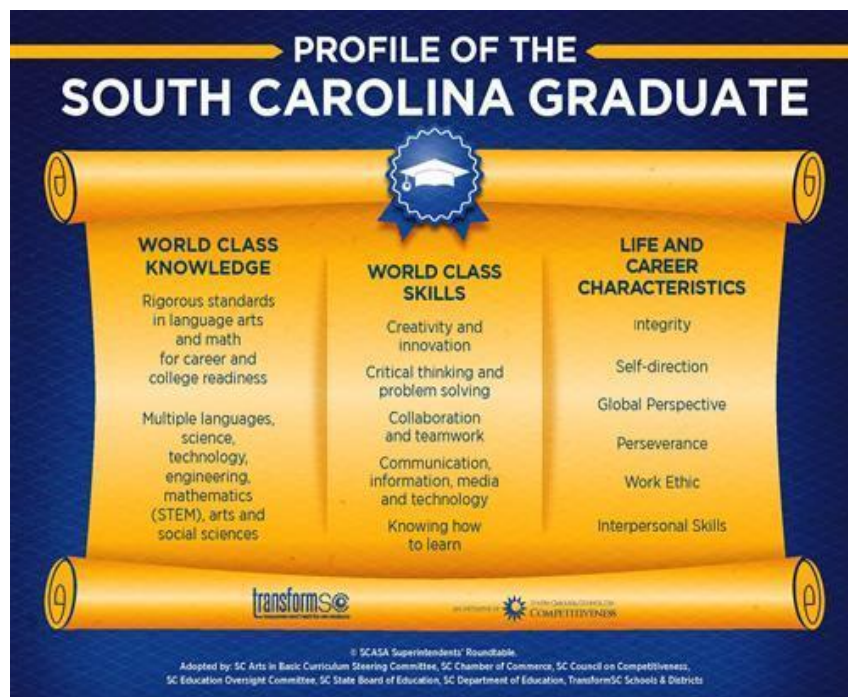
Status of States with Graduate Profiles



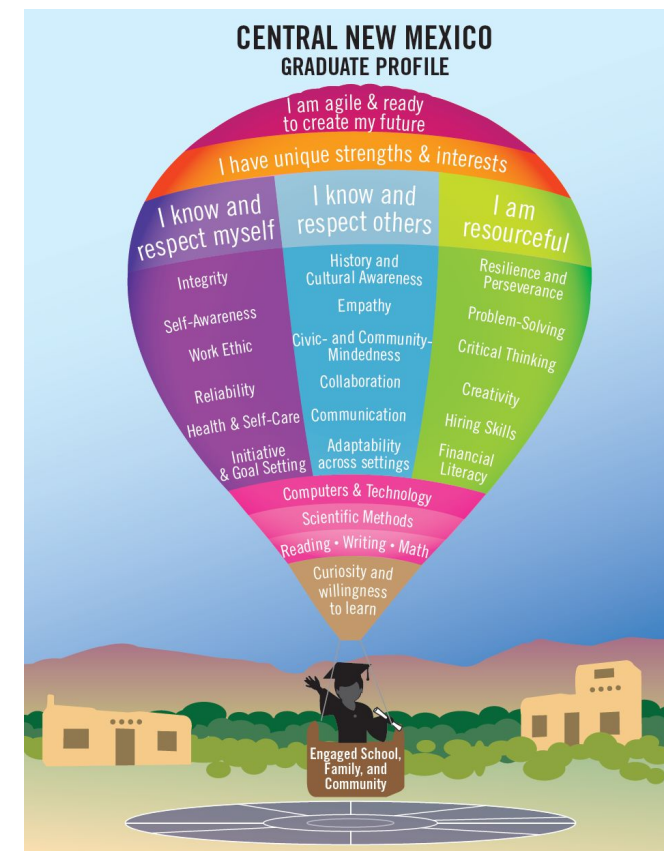
State Profile of A Graduate in Utah, and Virginia



Profile of a Graduate in South Carolina, and Central New Mexico



South Carolina



New Mexico

Common Themes in State Graduate Profiles



**Knowledge and Content
Mastery** (ELA, Math, Science,
Etc)





Habits of Success (Critical
Thinking, Collaboration,
Communication, Creativity)



Career Exploration

Learner Promise






Written by
KATHERINE CASEY
SUSAN PATRICK

A Promise for Equitable Futures:
 Enabling Systems Change to Scale
 Educational and Economic Mobility
 Pathways

October 2020

UNIVERSAL PATHWAYS




CULTURE & CHARACTERISTICS

Learner-Centered
 Universal Pathways develop agency and identity development, often through relational networks that create cultures of advisement and mentorship.

Flexible and Responsive
 Universal Pathways develop agency and identity development, often through relational networks that create cultures of advisement and mentorship.

Connected and Porous
 Universal Pathways develop agency and identity development, often through relational networks that create cultures of advisement and mentorship.

Equitable
 Universal Pathways develop agency and identity development, often through relational networks that create cultures of advisement and mentorship.




LEARNING & DEVELOPMENT

Competency Development
 Universal Pathways focus on the development of critical competencies, including contextualized knowledge and professional and personal skills, which may be universal and/or specific to a learner's chosen pathway.

Anywhere Anytime Learning
 Universal Pathways operate with sufficient flexibility to support and recognize learning when and where it happens, which may include but is not limited to school.

Integrated Programs of Study
 Universal Pathways use research-based and responsive approaches to learning and teaching across integrated K-12, postsecondary, workforce, and community settings.

Curriculum and Assessment
 Universal Pathways engage learners in flexible curricula that can be facilitated across a variety of spaces where learning happens. Balanced systems of assessment support learning and recognize competencies.




SYSTEMS & STRUCTURES

Universal Qualification Frameworks
 Universal Pathways are structured and defined through the qualification frameworks with clear benchmarks and milestones that learners must meet and pass to progress.

Universal Competencies and Credentials
 Universal Pathways are built around a set of core competencies that define learning objectives. They allow learners to earn credentials and other recognitions of learning that are universally recognized and validated.

Shared Cross-Sector Governance
 Universal Pathways are coordinated by state and regional governing bodies that establish vision, build core systems, and support cooperative design and implementation.

Shared and Transparent Data Systems
 Universal Pathways use dynamic data systems to support learning and advancement, as well as continuous improvement.



Support Learner Development

1. Create Individualized Learner Records
2. Support Student Counseling, Advisement, and Navigation
3. Prioritize Personal and Professional Skill Development
4. Create Opportunities for Career Awareness and Exposure

Promote College and Career Readiness

1. Create Competency-Based Graduate Profiles
2. Expand Work-Based Learning
3. Expand Competency-Based Learning
4. Promote Dual and Concurrent Enrollment
5. Develop Balanced Systems of Assessments

Create Regional Pathways

1. Enable Regional Planning Efforts
2. Fund and Assist Regional Intermediary Organizations
3. Develop Integrated Programs of Study
4. Disrupt Barriers to Access and Attainment

Build Regional Infrastructure

1. Enable Competency-Based Credit Flexibility
2. Build Integrated Data Systems
3. Invest in Regional Professional Development

Coordinate State-Level Workforce Readiness

1. Establish Workforce Goals with Equity Targets
2. Establish Cross-Sector Governance
3. Integrate College and Career Standards
4. Leverage Perkins V to Advance Pathways
5. Blend and Braid Revenue Streams

Modernize Human Capital Systems

1. Modernize Teacher Preparation
2. Redesign Teacher Licensure and Credentialing
3. Diversify the Teacher Workforce
4. Invest in Cultural Competency Training

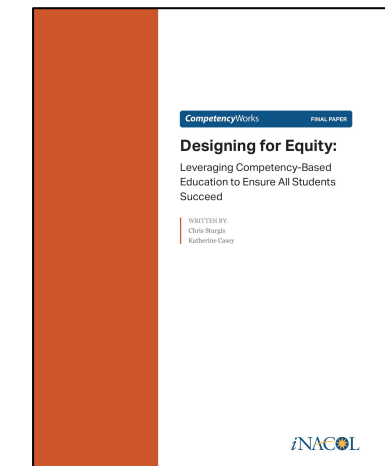
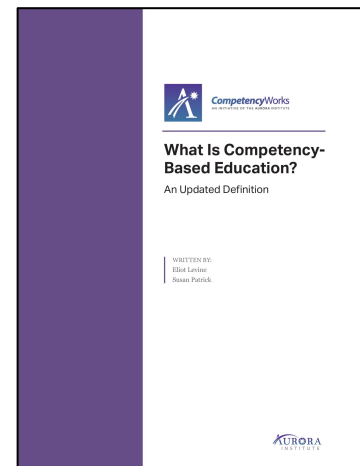
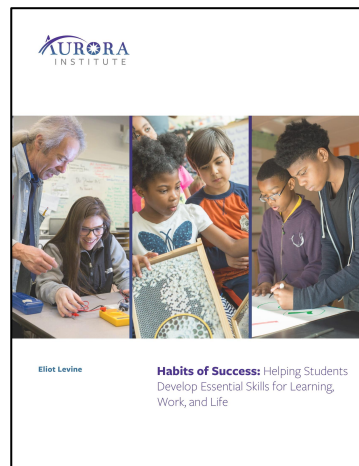
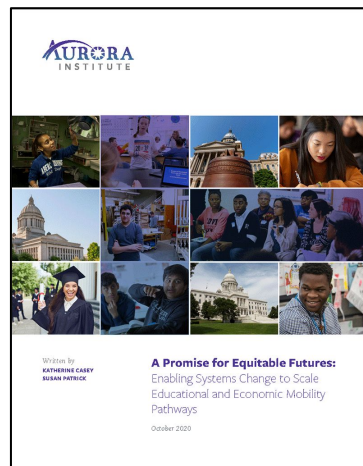
Stimulate Innovation

1. Authorize Innovation Zones
2. Fund Innovation
3. Increase Connectivity

Enact Equity

1. Promote Equitable Economic Development
2. Invest in Healthy and Connected Communities
3. Promote Racially Equitable Recovery

Aurora Institute Resources



The background of the entire image is a collage of various photographs from the Aurora Institute Symposium 2019. The photos show a diverse group of people in professional settings, including speakers at podiums, audience members in a large hall, and individuals in smaller group discussions. Some photos include text overlays like 'SYMPOSIUM | 2019' and 'AURORA INSTITUTE'.

AURORA INSTITUTE *Symposium*

OCTOBER 25-27, 2021 | VIRTUAL

“Leading Competency-Based Education Redesign”

Thank you for joining us!

Share Your Thoughts.

Participate in our one-minute poll (link in chat box).