



SYMPOSIUM BREAKOUT SESSION
WEDNESDAY, OCTOBER 27, 2021 | 1:15-1:35 PM ET

Connect2Learn: Identifying Dimensions of Digital Inequity and Responding with a Multi-Layered Approach that Responds to Students' Needs and Alters the Community's Digital Ecosystem

PRESENTERS:

- Philip Neufeld, Fresno Unified School District



Connect2Learn: Why?

Students live-in and graduate into a world that is **digitally infused**, rapidly changing ...

Better preparing students for **#AsYetImagined**

Rich learning in & **beyond** school,
across students' **daily journey**

Connect2Learn: **Dimensions of Digital Inclusion**

affordable, quality **internet access**, working **device** and apps, responsive **supports**,
know-why and *know-how* to **successfully**
navigate *digital services*

Connect2Learn: **Progress Prior to Pandemic**

Personalized Learning Initiative (PLi)

Necessary Conditions

- student computers in classrooms
- working Wi-Fi
- tech supports
- PL = Affective, Experiential, Actionable, PLCs

Connect2Learn: **Response to Pandemic**

PL to support shifts to remote learning

Shift to 1x1 laptops

Broadband and Hotspots

Tech Supports

Shift to Digital *Schooling*

Connect2Learn: Problem

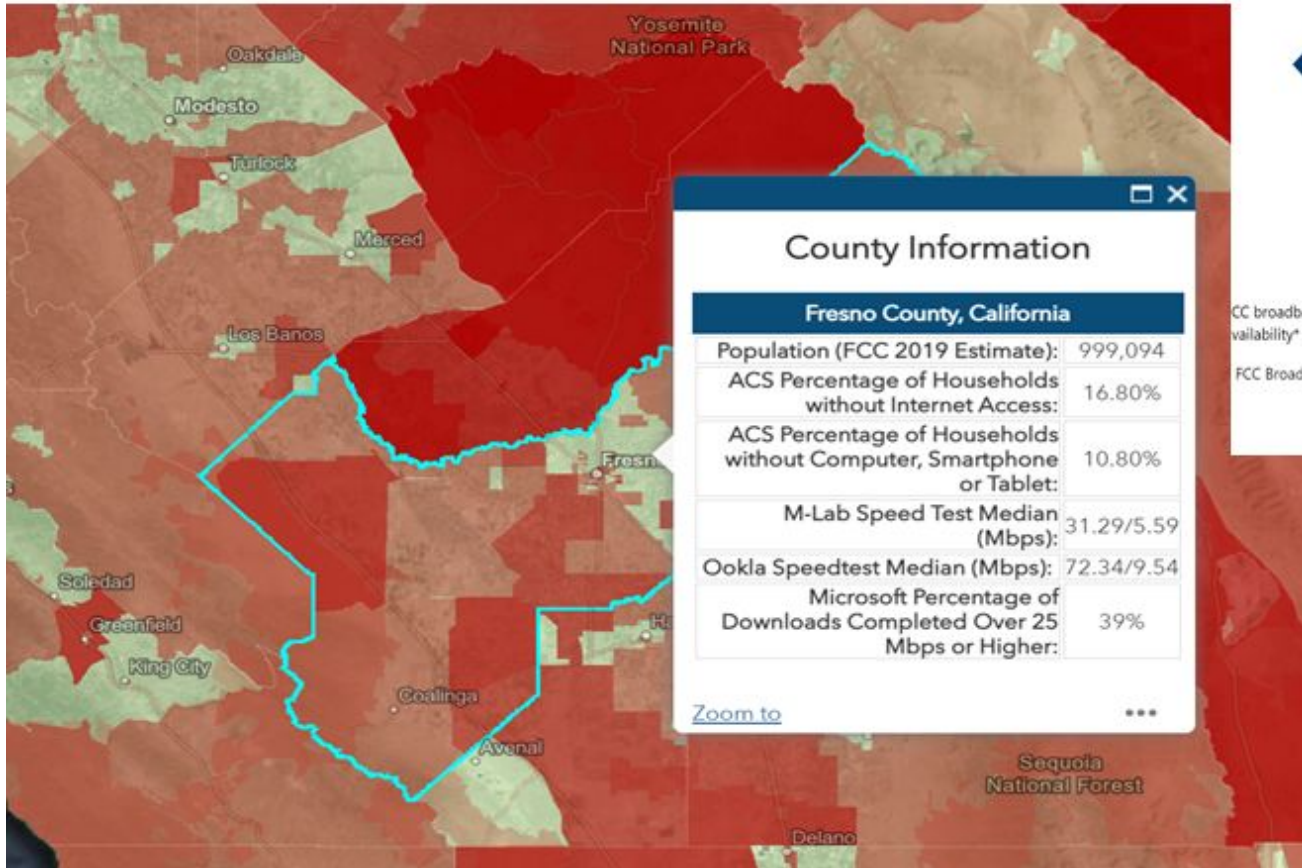
Pandemic ripped blinders off our eyes regarding **inequitable internet access**.

Quality of *neighborhood networks* **varied**.

Hotspots don't work well without cell towers.

Current regulatory **conditions** & carrier business models **won't solve** for access.

Connect2Learn: Inequitable Access to Internet



Maps showing FCC fixed broadband availability and broadband usage based on Microsoft data updated as of October 2020
California

FCC indicates broadband is not available to
~4K people



CC broadband availability*

FCC Broadband has or "could" provide greater than or equal to 25 Mbps / 3 Mbps

Microsoft data indicates ~478K people do not use the internet at broadband speeds

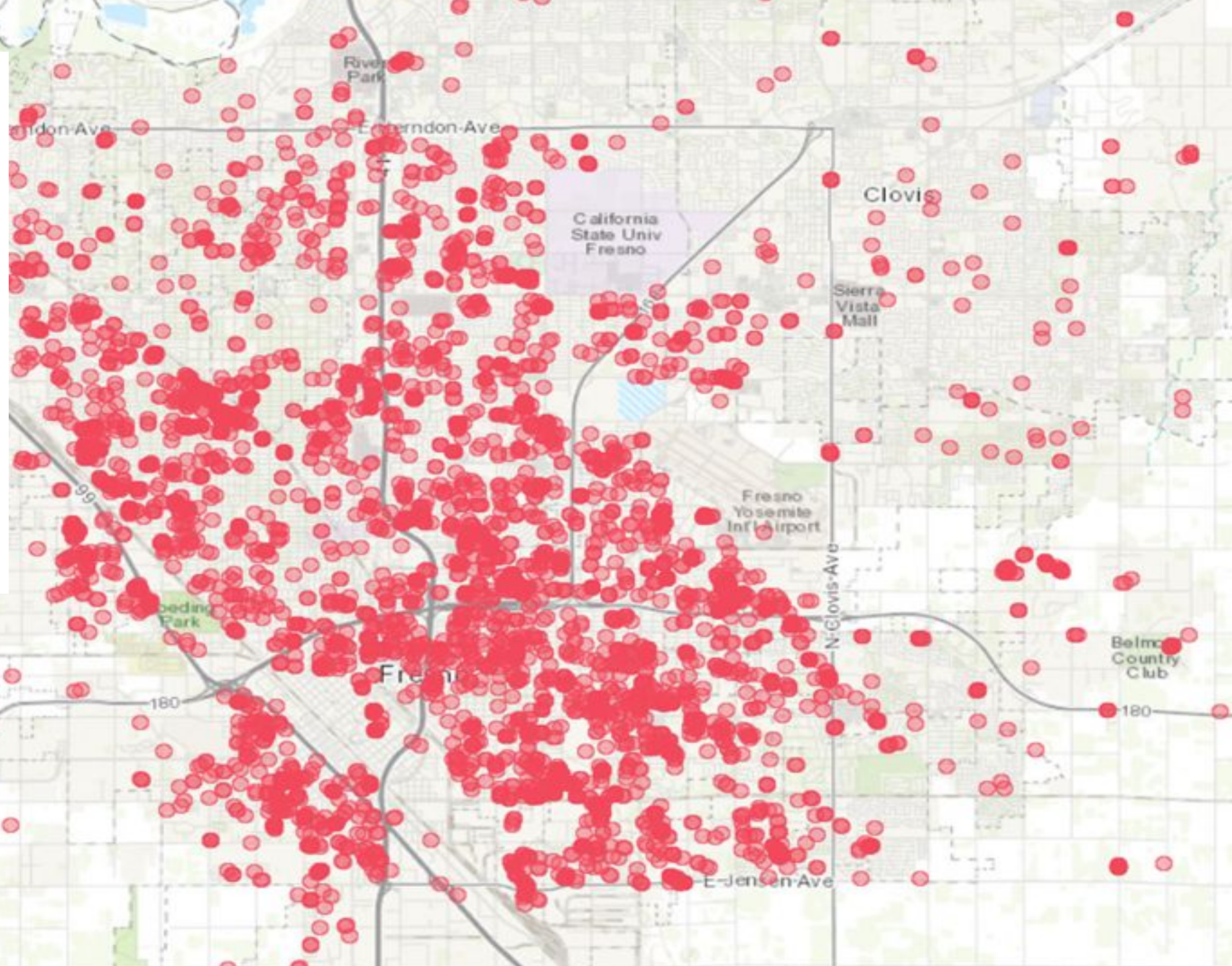


Broadband usage**

** Broadband speeds greater than or equal to 25 Mbps

Sources: FCC Fourteenth Broadband report based on form 477 data from December 2019 and Microsoft data from October 2020
To assist with additional broadband mapping analysis data has been made downloadable [here](#). Learn more in this [GitHub repository](#).

*Fresno Unified
Students
Experiencing
Not Enough
Bandwidth
myQol app*



Dimensions of Inequity

Student

Household

Community

Campus

Systems



Dimensions of Inequity

Personal Level

- Internet access throughout a person's daily journey.
- Working devices; usable, useful apps; accessible sites.
- Digital literacy as know-why & know-how to use safely & securely.
- Targeted supports for internet, devices, apps, and use of services.

Household Level includes affordable, quality broadband.

Community Level includes access in community centers & anchor institutions. as well as understanding about services, resources, supports, and advocacy.

Systems Level

- **Infrastructure** like shared open-access middle mile and last-mile.
- **Mapping** of existing and planned infrastructure, buildings, etc.
- **Data** on *quality of internet connections* to target **investments** and **advocacy**.
- **Improvements** to public policies and practices.

Reflect on Dimensions of Digital Inequity

How did these dimensions show up in your community?

What other aspects did you observe?

Layers of Response

Graduate Profile

Teaching

Learning

Schooling

Technology

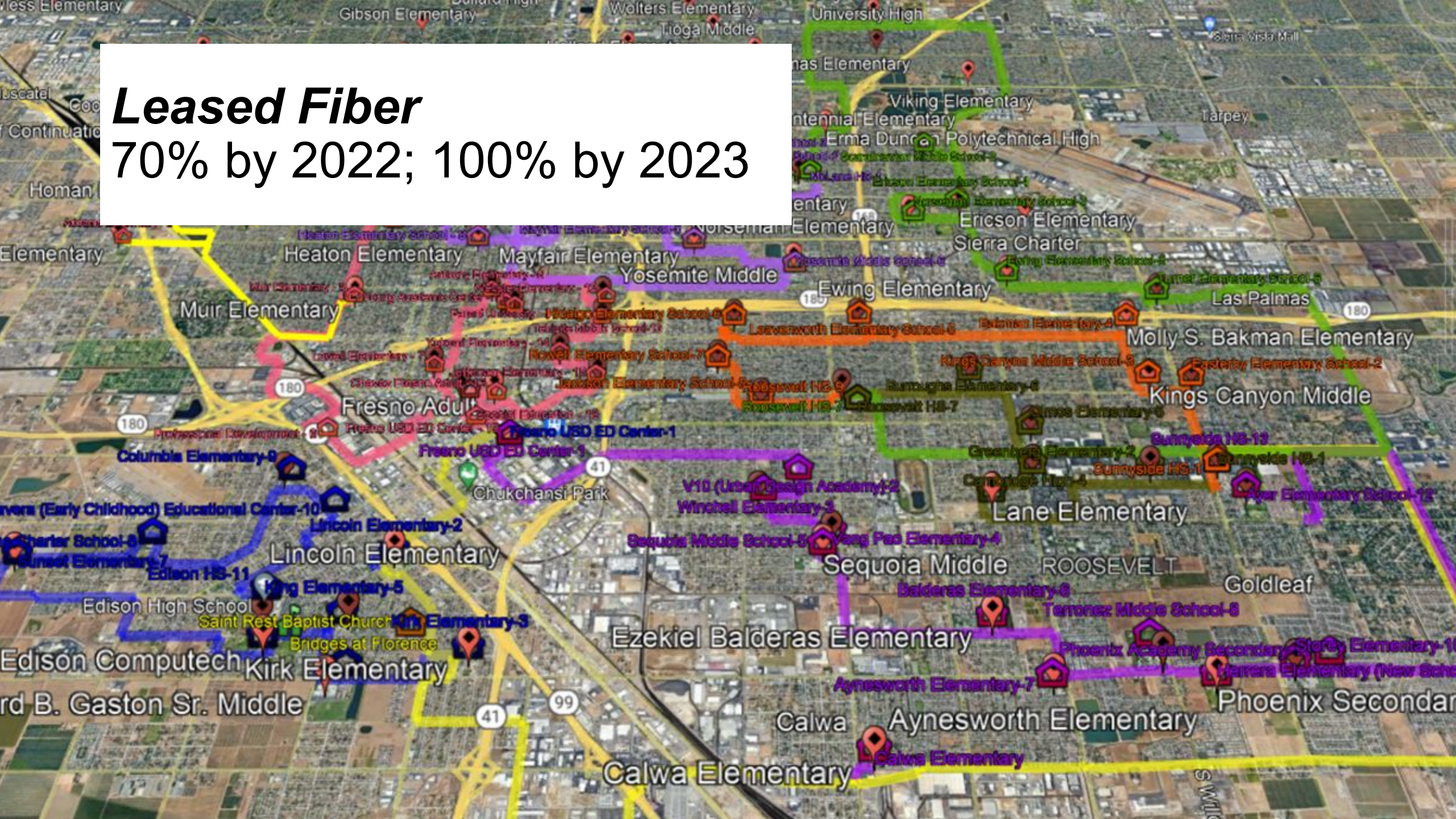
Transformation

Funding

Advocacy

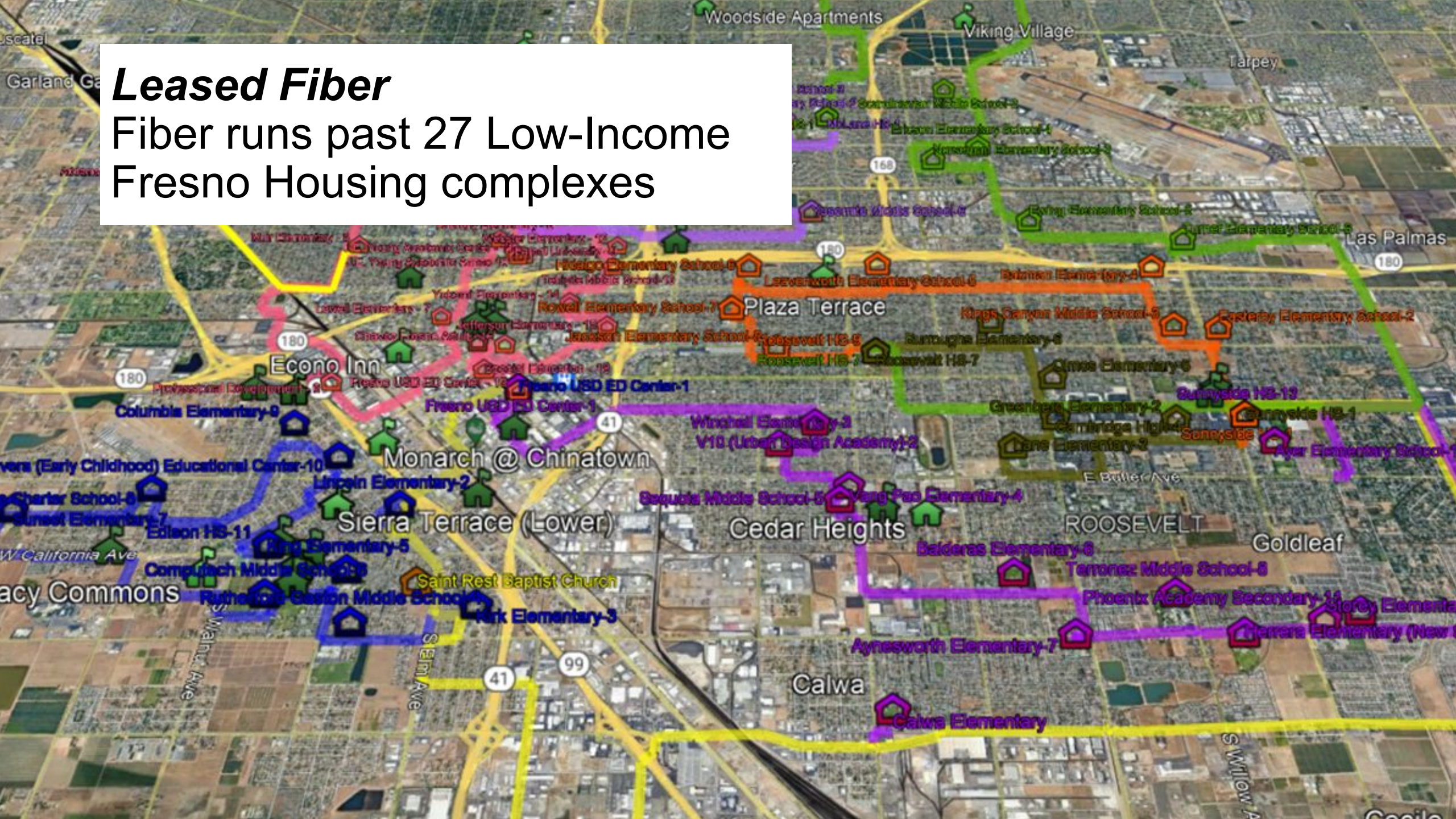
Coalitions

Leased Fiber
70% by 2022; 100% by 2023

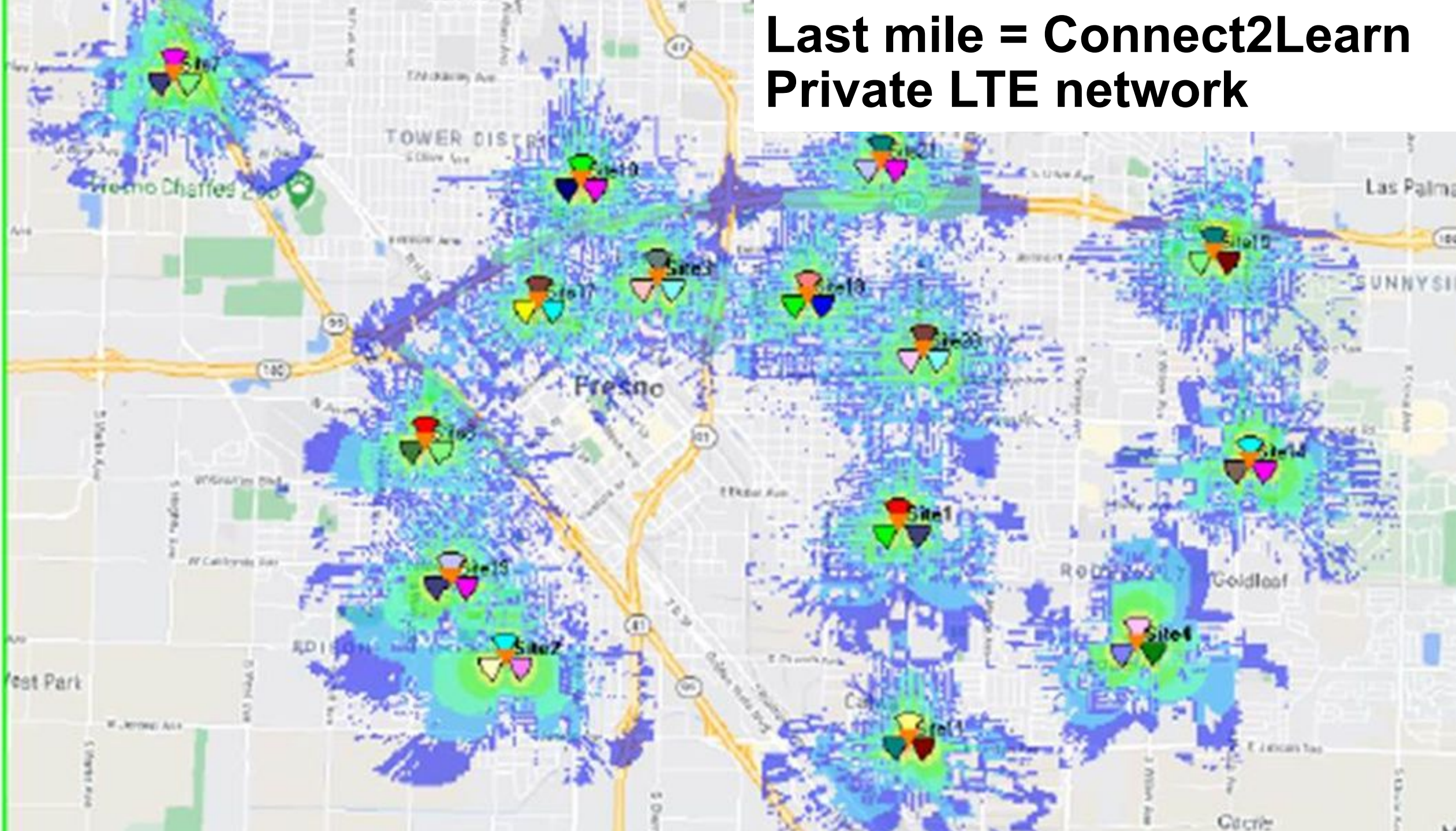


Leased Fiber

Fiber runs past 27 Low-Income Fresno Housing complexes



Last mile = Connect2Learn Private LTE network



FRESNO COALITION FOR DIGITAL INCLUSION

CROSS-SECTOR COLLABORATIVE OF ANCHOR INSTITUTIONS & COMMUNITY-BASED ORGANIZATIONS WORKING TO IMPROVE DIGITAL INCLUSION FOR THE UNDERSERVED.

Healthcare

Education

Employment

Anchors

Agencies

CBOs

Regional
Benefits

INTERNET ACCESS AS A BASIC NECESSITY FOR ALL

Reflect on Layers of Response

What layers of response support students digital inclusion?

What layers of response alter the community's digital ecosystem?

Reflect on Shared Resilience and Adaptability

Honor and re-imagine students' resilience

Honor and re-imagine community adaptability

We re-imagine
to become ready
to respond
in #AsYetImagined futures

The background of the entire image is a collage of various photographs from the Aurora Institute Symposium 2019. The photos show people in various settings: some are seated in an audience, some are standing and talking, and some are on stage. The collage is overlaid with a semi-transparent blue filter. The Aurora Institute logo, featuring a stylized star and the word 'AURORA', is visible in the top left corner of the collage. The text 'INSTITUTE' and 'Symposium' are centered over the collage.

AURORA INSTITUTE *Symposium*

OCTOBER 25-27, 2021 | VIRTUAL

“Leading Competency-Based Education Redesign”

Thank you for joining us!

Share Your Thoughts.

Participate in our one-minute poll (link in chat box).