



*CompetencyWorks & Coffee*  
**Exploring Work-Based Learning as an Entry Point to CBE**

*Slides: [bit.ly/WBLandCoffee](https://bit.ly/WBLandCoffee)*

October 2, 2024



## Chat Introductions!

- Name, Role, and Org/Location
- Share your first job or internship



# Aurora Institute Mission, Vision, & Values

## Our Mission

The mission of the Aurora Institute is to drive the transformation of education systems and accelerate the advancement of breakthrough policies and practices to ensure high-quality learning for all.

## Our Vision

We envision a world where all people are empowered to attain the knowledge, skills and dispositions necessary to achieve success, contribute to their communities and advance society.

## Our Values



Student-Centered



Equity-Driven



Future-Focused



Credible



Knowledge-Driven



Collaborative

Aurora Institute acknowledges that this virtual webinar takes place on lands that have been home to Indigenous peoples since time immemorial. By focusing on the whole child, real-world application, and learning in context, competency-based education (CBE) uses similar principles to traditional Indigenous education. Whether intentional or not in the initial design, we acknowledge that CBE ideas reflect traditional Indigenous education approaches that long pre-date CBE. We want to take a moment to honor the ancestral grounds that we are collectively gathered upon and support the resilience and strength that Indigenous people have shown worldwide. Specifically, we reflect on the impact of colonization on Indigenous Peoples through education systems and the profound brutalization faced as their traditional knowledge systems and ways of being were marginalized and suppressed.

Explore native land maps:  
<https://native-land.ca>



# Welcome



**CompetencyWorks**  
**& COFFEE**

- Welcome & Meeting Invitations
- Work-Based Learning & CBE
- Breakout Discussions
- Share Out & Closing Reflection

## Meeting Invitations

- ❖ Assume good intent & pay close attention to impact
- ❖ Share the air
- ❖ Engage with agency and an open mind
- ❖ Accept and expect non-closure
- ❖ Have fun while reflecting on our work

# What is work-based learning?

Activities and experiences in which a student:

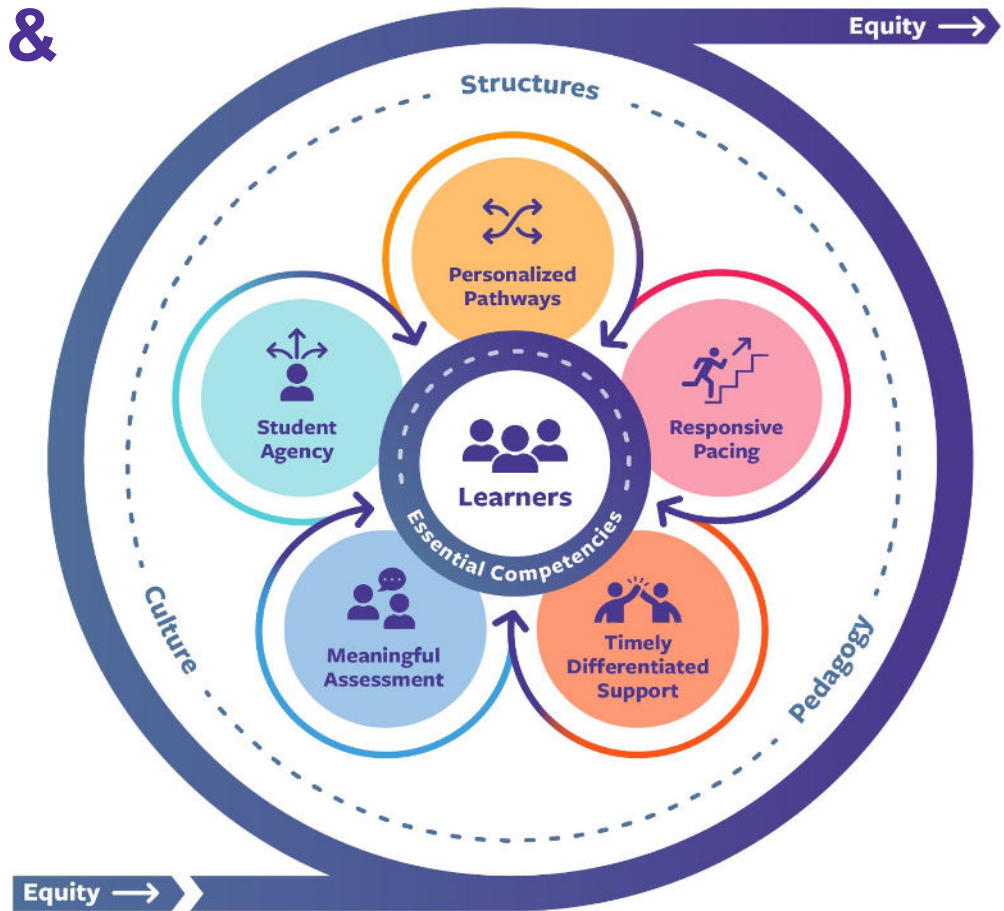
1. Goes to a workplace or works with an industry professional; and
2. Performs meaningful job tasks that develop their skills, knowledge, and readiness for work and support career entry or advancement.



# Work-Based Learning & Competency-Based Education



*Students learn actively using different pathways and varied pacing.*



# Networking Breakout Discussions

## Featured Breakout Examples

1. **CareerWise Colorado** - MK Sagaria-Barritt, Director of Pathways and Special Projects
2. **Chelsea Opportunity Academy Work-To-Credit** - Sela Kenen, Multilingual Learner Teacher & Work-To-Credit lead
3. **Future Focused Education X3 Internship Program** - Gema Gonzalez and Atieno Ouma, Workforce Learning and X3
4. **ImBlaze & Big Picture Learning** - Lexi Ortiz, Digital Partnerships Manager with John Clemente, South Bronx Community Charter High School
5. **Indiana Department of Education** - Flora Jones, Director of Student Pathways & Opportunities & Elise Locke, Assistant Director of Student Pathways
6. **YouthForce NOLA** - Paige Boetefuer, Director of The Solutions Lab and Sarah Bell, Chief of Industry Exposure & Experience

## Discussion Guide

- Chat intros: Name, role, org & why you picked this room
- Featured example shares
- Open discussion
- Summarize: pick 1-3 ideas/question & add to the slides below

**Slides:** [bit.ly/WBLandCoffee](https://bit.ly/WBLandCoffee)



# CareerWise Colorado

## Summarize (1-3 ideas/questions):

- Policy enabler - Legislation created a pathway for education apprenticeships
- Education apprenticeship is a driver for diversifying the teacher workforce
  - Bachelor's degree completion leads to apprentices taking the PRAXIS (teaching license) and obtaining a full-time role in the district
- See the guidelines doc - <https://www.cde.state.co.us/educatorportal/teacher-apprenticeship>

## Links/Resources

- [CareerWise Colorado Website](#)
- [Teacher Degree Apprenticeship Toolkit](#)

Presenter: MK Sagaria-Barritt,  
Director of Pathways and Special  
Projects

Email:

mk.sagaria-barritt@  
careerwisecolorado.org

# Chelsea Opportunity Academy (COA)'s Work-To-Credit

## Summarize (1-3 ideas/questions):

- Credit for external experience is a new paradigm
- Important to understand relationships (what kids are doing outside of school and impact/learnings)
- Like meeting students where they are at. This opportunity lets them do both.

## Links/Resources

- <https://www.chelseaschools.com/coa>
- [Flexible, Competency-Based Learning in Action at COA](#)

Presenter: Sela Kenen, Multilingual Learner Teacher & Work-To-Credit lead

kenens@chelseaschools.com

# Future Focused Education X3 Internship

## Summarize (1-3 ideas/questions):

1. Students build a range of skills from interpersonal (communication, feedback, working as a team, asking for help, being on time/communicating when you run late) in addition to industry specific skills.
2. Having FFE as an intermediary providing support and building relationships with partners helps with logistics around pay, liability, support for mentors, etc.
3. There are many sectors and a special focus on healthcare as a high need area for developing pipelines (that applies across many communities)

## Links/Resources

- <https://futurefocusededucation.org/x3-internships/>
- [The X3 Internship Program Models a Vision for Work-Based Learning](#)

Presenters: Gema Gonzalez and Atieno Ouma, Workforce Learning and X3

# ImBlaze, Big Picture Learning & South Bronx Community

## Summarize (1-3 ideas/questions):

- Mapping learning from internship/work experiences directly to the school's defined competencies allows that learning to be integrated into the school's overall competency-based approach
- Working on how to empower work supervisors to help assess learning too
- Tech tools can make this more doable – LMS (Schoology), ImBlaze, AI

## Links/Resources

- <https://www.imblaze.org/>
- <https://www.bigpicture.org/>

Presenter: Lexi Ortiz, Digital Partnerships Manager at Big Picture Learning with John Clemente, South Bronx Community Charter High School

Email me!

[lexi@bigpicturelearning.org](mailto:lexi@bigpicturelearning.org)



# Indiana Department of Education

## Summarize (1-3 ideas/questions):

- How do you support change management?
- How do you support rural communities?
- How do you engage families and communities?

## Links/Resources

- <https://www.in.gov/doe/students/graduation-pathways/>
- <https://www.in.gov/doe/diplomas/>

Presenters: Ms. Flora Jones, Director of Student Pathways & Opportunities and Elise Locke, Assistant Director of Student Pathways

# YouthForce NOLA

## Summarize (1-3 ideas/questions):

- Asset-based conversations and PD about NOLA demographics
- Junior Achievement partnership to support pre/post school prep before work-based experiences
- How do we measure impact of these opportunities?

## Links/Resources

- [www.youthforcenola.org](http://www.youthforcenola.org)
- [Employer Hub Menu](#)
- [Internship Program Overview](#)

Presenters: Paige Boetefuer, Director of The Solutions Lab & Sarah Bell, Chief of Industry Exposure & Experience

Want to learn more? Contact [paige@youthforcenola.org](mailto:paige@youthforcenola.org)

# Bonus Board!



**CompetencyWorks**  
**& COFFEE**

## Resources

- [Add yours]
- 

## Lingering Questions

- [Add yours]
-



# Learn More

## *Expanding Student Access to Work-Based Learning: Federal Policy Recommendations*







CompetencyWorks  
& COFFEE

# Reflection & Closing

- Please take a minute to fill out this short feedback survey: <https://s.zoom.us/m/bZllac055>
- Bonus reflection in the chat:
  - “Buy someone a coffee/tea” with a shoutout: share an appreciation for something from your discussion!
  - What are you taking away?



# Symposium

## JOIN US

November 2nd-5th, 2024 New Orleans, LA

---

And check the *CompetencyWorks* blog every Friday for new posts relating to competency-based education.

# *Stay Connected*

 [www.aurora-institute.org](http://www.aurora-institute.org)

 [communications@aurora-institute.org](mailto:communications@aurora-institute.org)

 (703) 752-6216











A New Dawn for  
Every Learner