



Developing Equity, Efficacy, and Effectiveness in a Competency-Based System

October 1, 2020





Welcome

- **Introduce yourselves.**
 - Share who you are, where you are from, and one hope you have for this school year.
- **Ask and answer questions.**
 - Use the chat function to pose questions of our panelists. All attendees are encouraged to respond.
 - We will leave time for our panelists to answer questions.
- **Share your learning.**
 - Tell your colleagues what you are learning. Use #Aurora2020 on Twitter and mention @Aurora_Inst.
- **We are recording and archiving the webinar.**
 - The slides and video will be available on aurora-institute.org.

Systemic Implementation of a Competency-Based System (CBS)

Ensuring Equity, Sustaining Efficacy and Measuring Effectiveness

Meet The Team



Cindy Davis

Principal: Sherrelwood
Elementary

- ES Principal
- Literacy Coordinator
- Title 1 Specialist
- ES Teacher
- Instructional Assistant



Janelle Stastny

Principal: Mesa Elementary

- Es Principal
- District Instructional Coach
- ES Teacher



Claudette Trujillo

Principal: Metropolitan
Arts Academy

- ES Principal
- PK-8 Principal
- MS Asst. Principal
- MS Instructional Coach
- Alternative Education HS Teacher
- MS Teacher
- CBS Parent

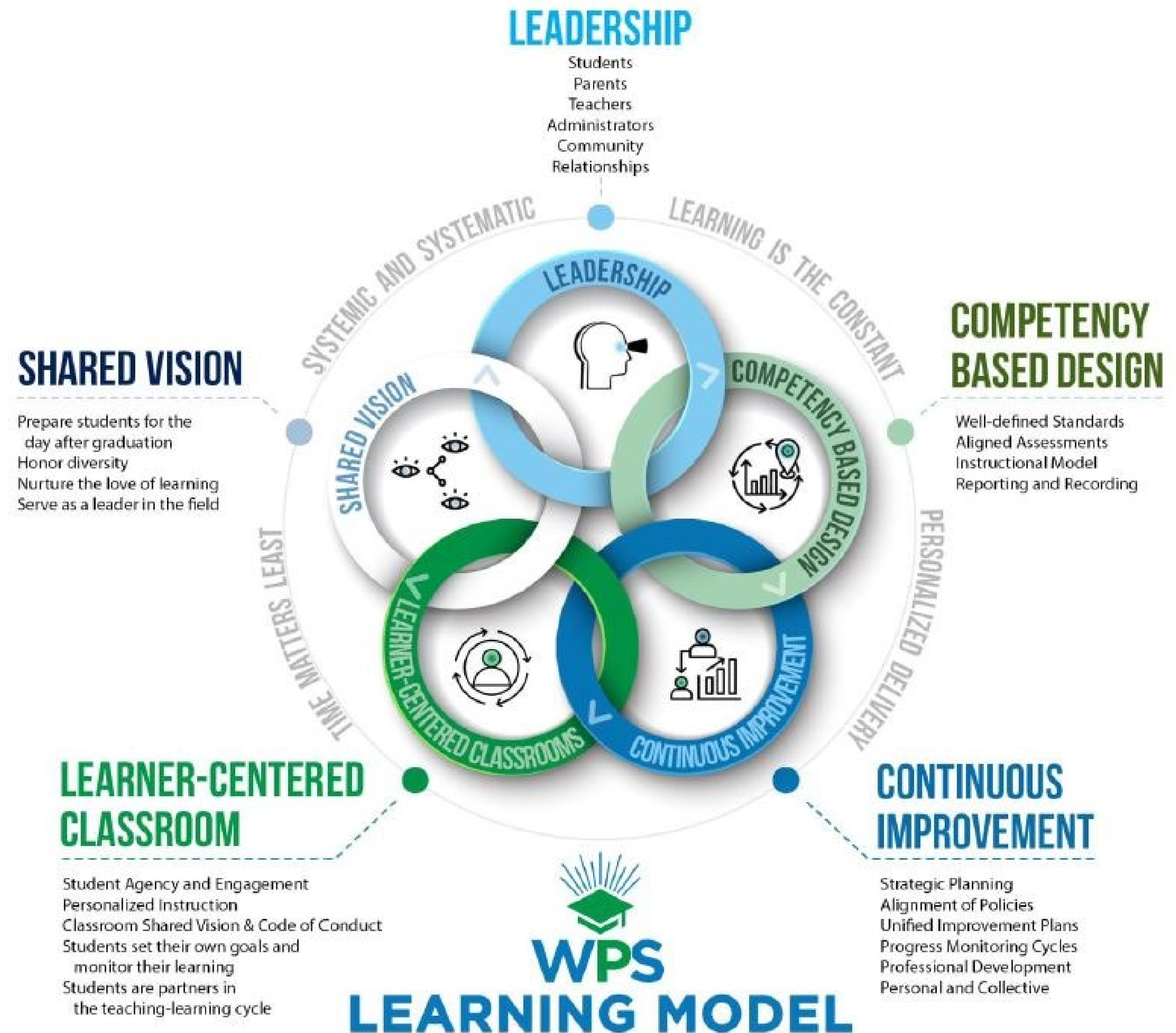


Roger Vadeen

Principal: Sunset Elementary

- ES Principal
- ES Asst. Principal
- ES Teacher

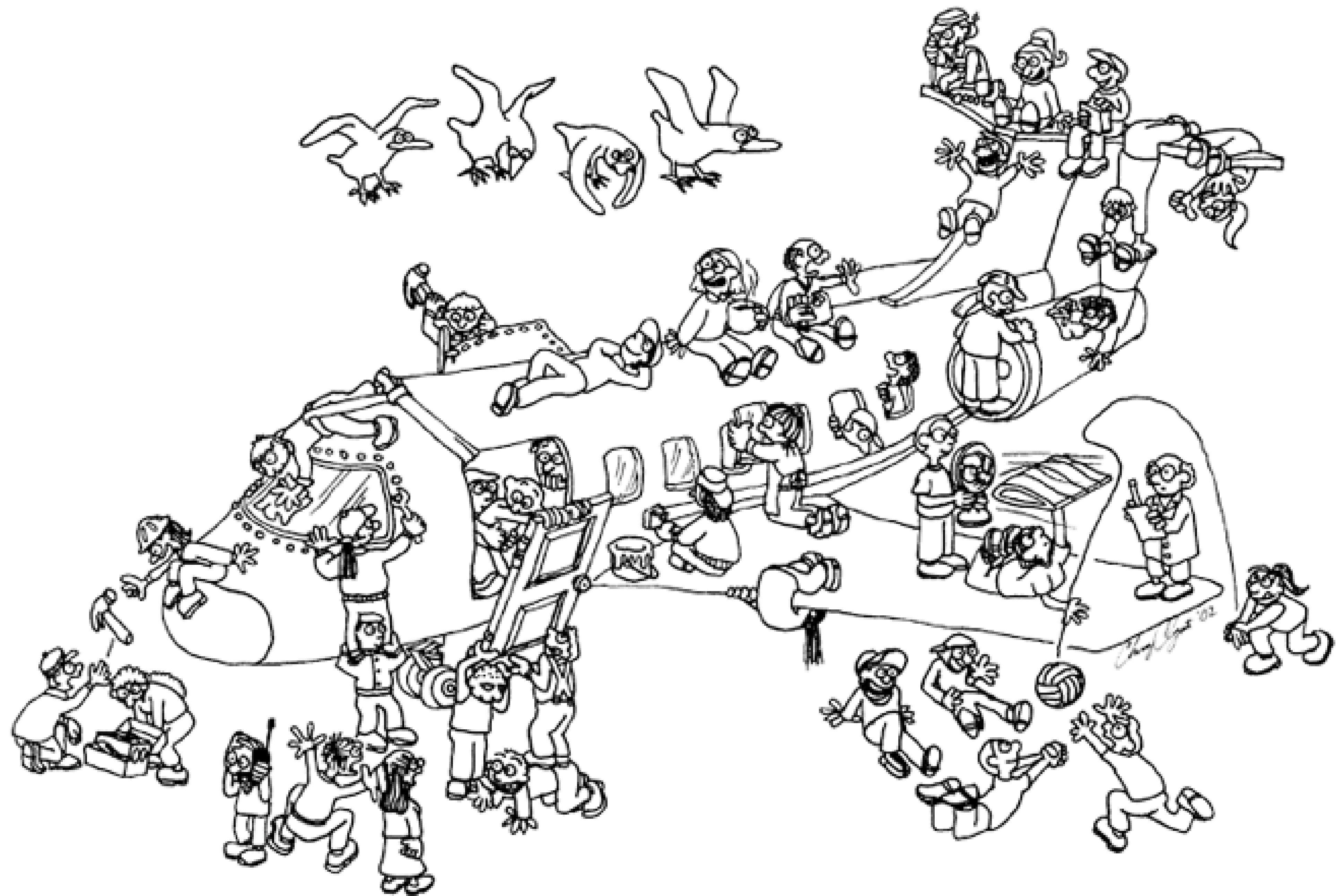
SYSTEMS IMPLEMENTATION



March 13, 2020



Now What?



CULTURE AND CLIMATE

In-Person and Remote Learning

MEASURING EFFECTIVENESS

Plan-Do-Check-Adjust

SUSTAINING EFFICACY

**Fostering Student Agency and
Supporting Differentiated
Instruction**

ENSURING EQUITY

**Meeting Students
Where They Are**



CULTURE AND CLIMATE

Fighting Teacher Burn Out with Collaborative Measures: Cohorts,

- Team Teaching
- Celebrations

MEASURING EFFECTIVENESS

Transitioning to Simultaneous Remote and Face to Face learning for the Fall:

- Identifying Gaps,
- Delivering Interventions
- Providing Feedback

SUSTAINING EFFICACY

Getting Creative and Responsive with Assessment & Instruction:

- Art's Integrated PBL's
- Digital Data Notebooks
- Master Schedule Design

ENSURING EQUITY

- Academic and SEL Resources to make it all work



The Mesa Story

10

CULTURE AND CLIMATE

- Daily & Weekly check-in
- Celebrating students & staff
 - SEL Goals

MEASURING EFFECTIVENESS

- Building Leadership Team
- Student goal setting using Empower
- Strengthened family with Empower
 - Data Review

SUSTAINING EFFICACY

- Master Schedule around Cohorts
- Blended Learning

ENSURING EQUITY

- Continue to support staff using the coaching model
- Purposeful Planning



The Sherrelwood Story

11

CULTURE AND CLIMATE

- Model a growth mindset and promote it in your students
- Apply the District and School vision in the classroom

MEASURING EFFECTIVENESS

- Showing what you know through Project and Community Based Learning
- Implementing Proficiency Scales and Performance Levels

SUSTAINING EFFICACY

- Promoting personal efficacy and student efficacy
- Building a school of leaders: staff and students

ENSURING EQUITY

- Laying open inequities before and now
- Receiving timely differentiated support at the pace that's needed



CULTURE AND CLIMATE

- Staff and Family Assurances - Reopening Planning
- Parent and Student Communication - Family Choice

MEASURING EFFECTIVENESS

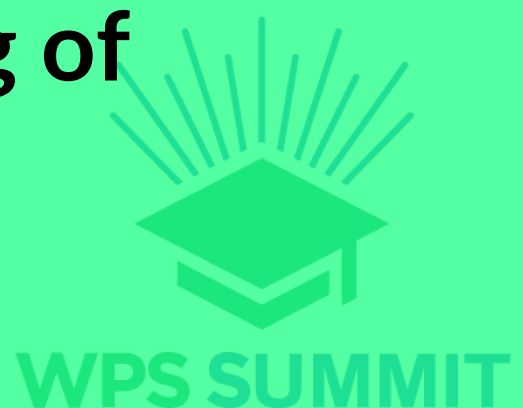
- Teacher Action Planning

SUSTAINING EFFICACY

- WOLF CAMP: What it means to be a student at Sunset Ridge
- Scheduling for Differentiation and Student Ownership

ENSURING EQUITY

- Data Reporting; Goal Setting; Student Action Planning; Tracking of Goals; Celebrations



Questions for us?

How can we help you?



CONTACT US

www.westminsterpublicschools.org

 **Claudette Trujillo**

ctrujillo@westminsterpublicschools.org
720-542-4265

 **Roger Vadeen**

rvadeen@westminsterpublicschools.org
303-657-3873

 **Cindy Davis**

cdavis@westminsterpublicschools.org
303-657-3867

 **Janelle Stastny**

jstastny@westminsterpublicschools.org
303-657-3855



Quick Feedback

One-Minute Survey: https://www.surveymonkey.com/r/AuroraWebinar_10-1-20



Pre-Symposium Webinar Series

1. **Building Educator Capacity for Equity: Competency-Based Approaches to Professional Learning for Teachers and Administrators** | October 5, 2020 | 2 pm ET
2. **Impact of Personalized Learning through Interest-Based Internships** | October 6, 2020 | 2 pm ET
3. **Improving the Equity in Personalized Learning through a Multi-Tiered System of Support (MTSS) Approach** | October 8, 2020 | 2 pm ET
4. **Implementing Student-Centered Learning: Lessons Learned from Leaders in the Arena** | October 13, 2020 | 2 pm ET
5. **Lessons from COVID-19: How Competency-Based Education Provided for Continuity of Learning in Three North Carolina Schools and Is Shaping the Path Forward** | October 15, 2020 | 2 pm ET
6. **High School Internships in the Time of COVID-19: Mentorship, Connections, and More in Virtual Work-Based Learning** | October 19, 2020 | 2 pm ET
7. **Choice in Learning: Examination of Students' Use of Flex Time in High School** | October 22, 2020 | 2 pm ET
8. **Competency-Based Education Systems: Performance Assessment Using Proficiency Scales** | November 5, 2020 | 2 pm ET

<https://aurora-institute.org/events-webinars/>



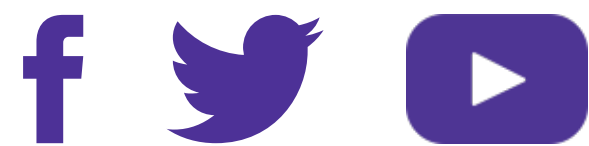
AURORA INSTITUTE

Symposium 2020

OCTOBER 26-28, 2020 | **VIRTUAL**



Stay Connected



www.aurora-institute.org



communications@aurora-institute.org



(703) 752-6216



A New Dawn for
Every Learner